



Upper Hudson River Floodplains – Project Update

Hudson River PCBs Superfund Site

December 3, 2015

Project Status



- Floodplains Administrative Order on Consent (AOC) –
September 30, 2014
 - Final RI/FS Work Plan
- Reviewed draft Floodplain Characterization Report
- Reviewed Cultural Resource Work Plan
- Provided oversight of Short Term Response Action (STRA) activities
- Conducted field verification activities
- Ongoing public outreach

Floodplain Characterization Report (FCR)



- Reviewed preliminary draft FCR
 - Describes physical characteristics of the project area
 - Identifies local regions and Flood Frequency Intervals (FFIs)
 - Identifies project boundary
 - Summarizes existing data
 - Describes distribution of PCBs in floodplain
 - Describes data sufficiency and data gaps

Stage 1A Cultural Resources Assessment (CRA) Work Plan



- Required under Section 106 of the National Historic Preservation Act (NHPA)
- Stage 1A CRA will identify previously recorded resources
- Evaluates the potential for previously unidentified cultural resources within the project area
- Will determine the need for Stage 1B assessment activities
 - Stage 1B includes field investigations

Annual Short Term Response Action (STRA) Inspections/Repairs



- Reviewed 2014 inspection report
- Repair work conducted at two properties in 2015
 - 1 residential property – September 21, 2015
 - Fort Hardy Park – November 19, 2015
- Conducted 2015 inspection of STRA locations
- Replaced signage at STRA locations where damaged or missing

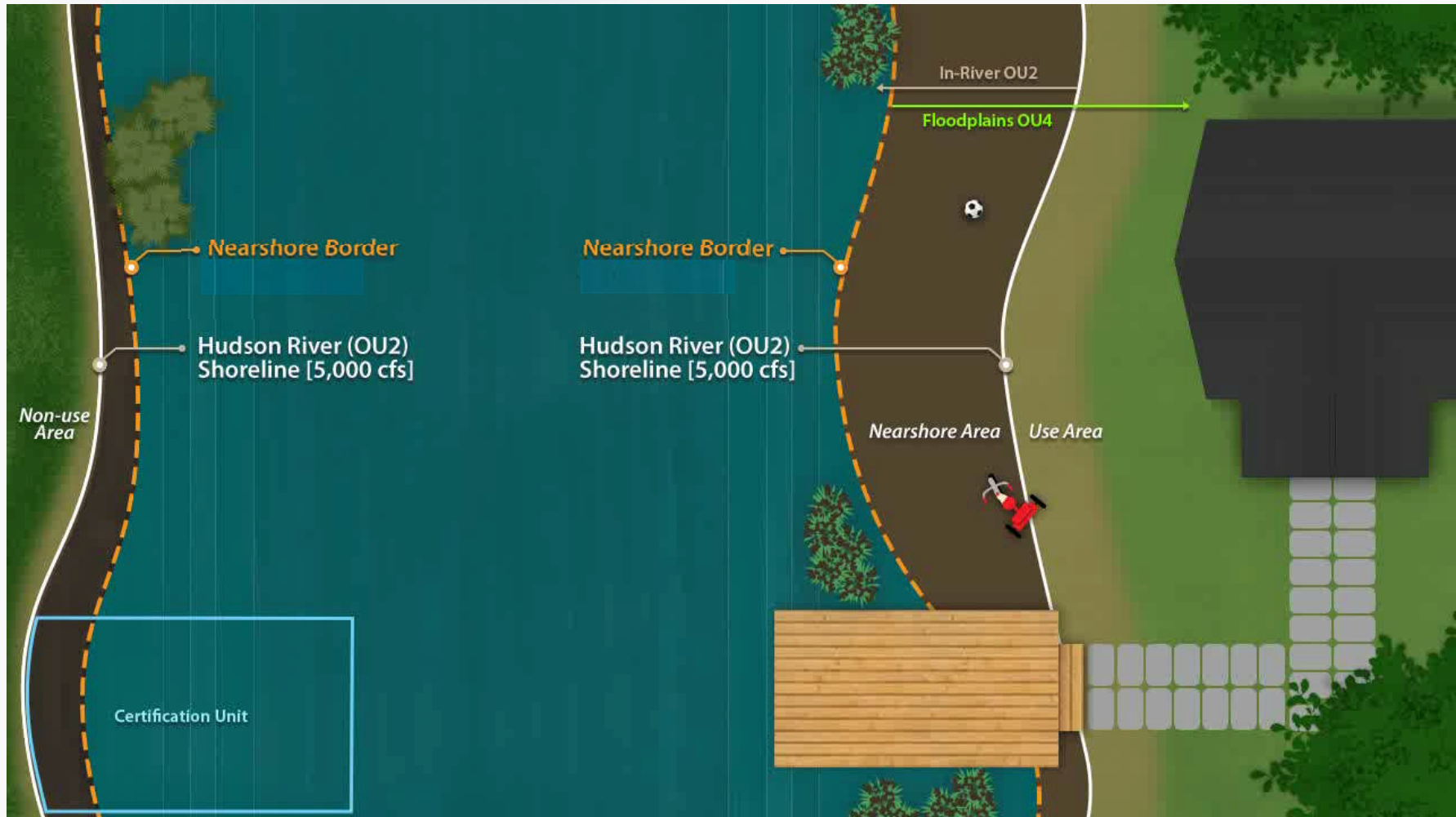


Field Verification



- Approved Field Verification Work Plan – October 8, 2015
- Field work conducted October 19 – November 11, 2015
 - Potential Human Use Areas – areas within the near shore show signs of potential use
 - 127 Initially identified – 142 field verified
- Standing Water Areas – areas containing water year round
 - 219 individual pools initially identified – 166 field verified
- Continuing to incorporate the data into the Floodplain Characterization Report

Near Shore Areas (potential use)



Potential Human Use Areas



Standing Water Areas



Public Outreach and Ongoing Coordination



- Preparing Community Involvement Plan (CIP)
- Preparing Floodplain Fact Sheet
- Continuing to obtain property access
- Coordination with elected officials and property owners
- Coordination with GE on outreach associated with ongoing sampling
- Coordination with NYSDEC, DOH, NYSCC, and NPS

Next Steps Anticipated For 2016



- Finalize Floodplain Characterization Report
- Community Involvement Plan
- Screening Level Human Health and Ecological Risk Assessments
- Prepare Field Sampling Plan (data gaps)
 - GE to work with EPA to establish sampling locations
- Floodplain sampling
- Continue field verification
- Continue to refine schedule

Future Activities



- EPA and GE discussing statistical approach for calculating Exposure Point Concentrations
- Additional floodplain sampling and data collection
- Data Summary Report
- Revised Floodplain Characterization Report
- Phase 1A/1B Cultural Resource Surveys
- Pathway Analysis Report (PAR)
- Additional evaluation of near-shore sediment areas
- Phase 1 Baseline Human Health Risk Assessment (BHHRA)

Future Activities (continued)



- Data management
- Data collection Phase 2 BHHRA
- Phase 1 Baseline Ecological Risk Assessment (BERA) Work Plan
- Phase 1 ERA data collection
- Phase 1 ERA report
- Final Floodplain Characterization Report
- Final BHHRA and BERA reports
- Remedial Investigation Report (RI)

Future Activities



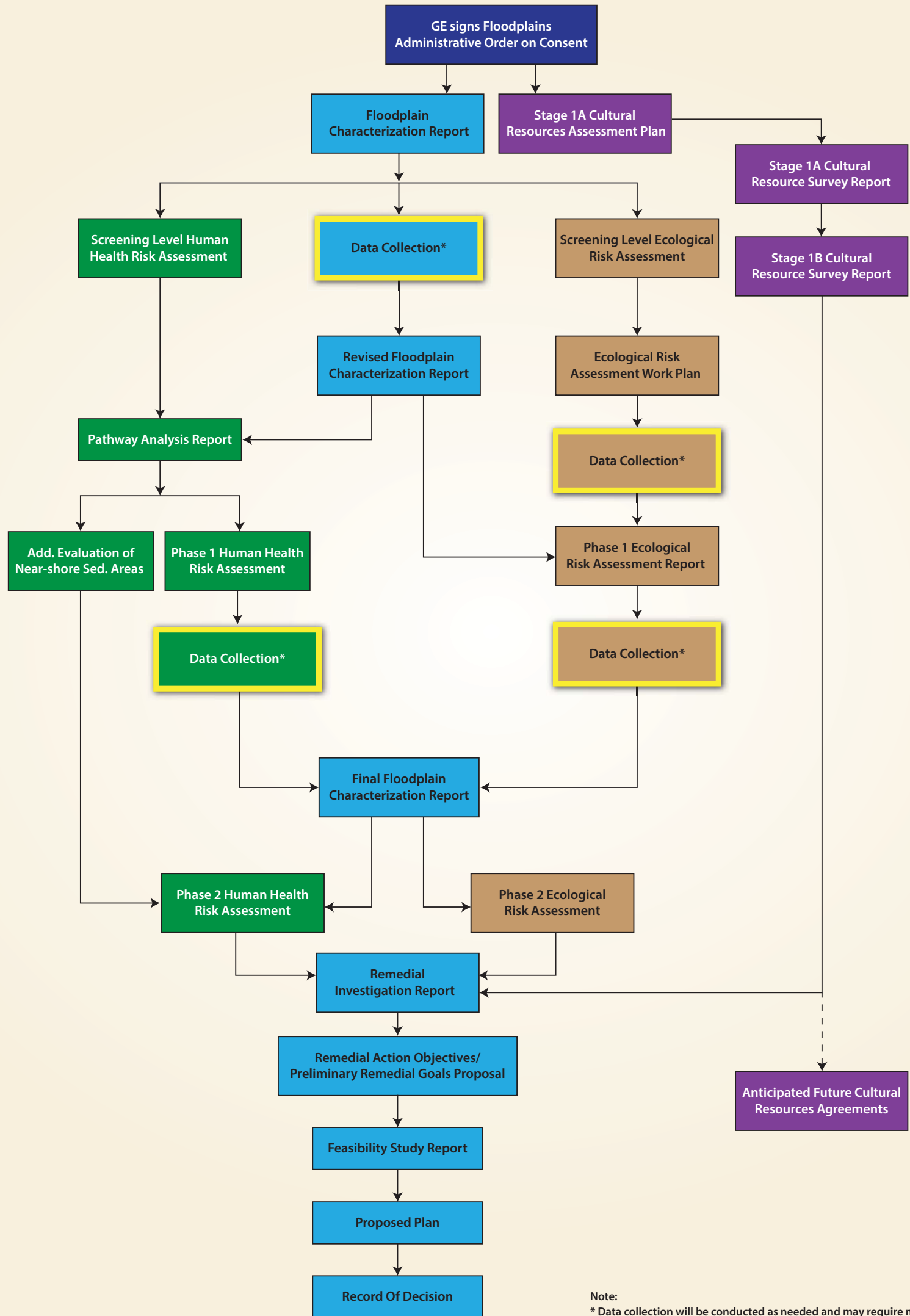
- Remedial Action Objectives / Preliminary Remedial Goals (RAO/PRG)
- Feasibility Study (FS) Screening Report
- Treatability Studies (if necessary)
- FS Report
- Proposed Plan
 - Public comment period
 - Public meetings
- Record of Decision (ROD)

* Additional data collection and Data Summary Reports as needed



Questions?

Hudson River Floodplains Remedial Investigation/Feasibility Study Process



Note:
* Data collection will be conducted as needed and may require multiple iterations. Includes development of sampling plans and data summary reports.